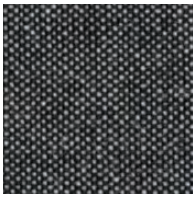
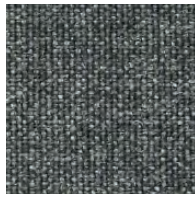


Remix 3

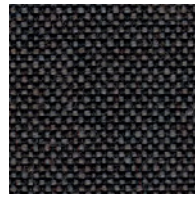
kvadrat



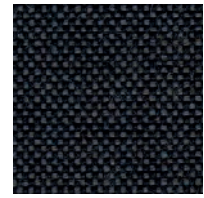
152



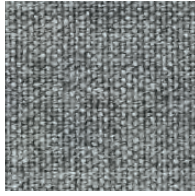
163



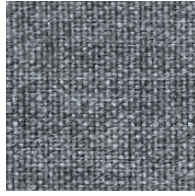
276



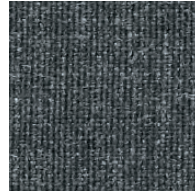
286



133



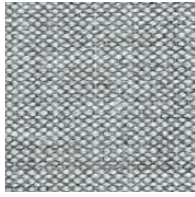
143



173



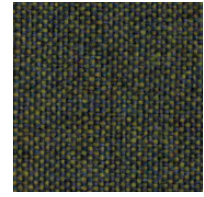
113



123



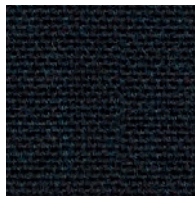
183



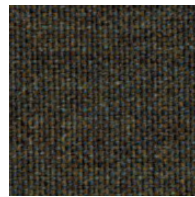
842



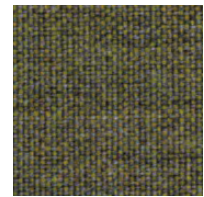
906



196



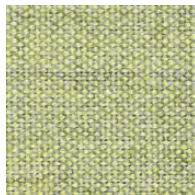
954



962



912



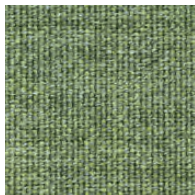
923



412



982



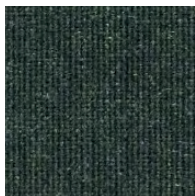
933



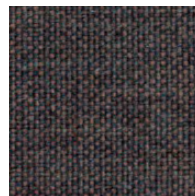
942



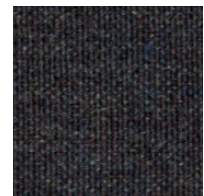
996



973

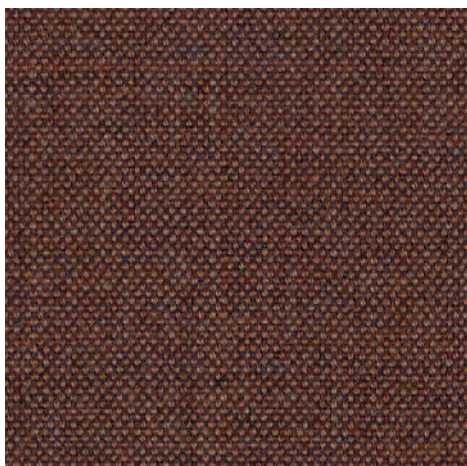


672

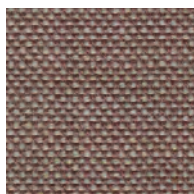


362

Remix 3



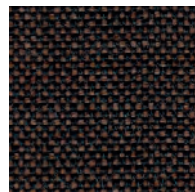
346



326



242



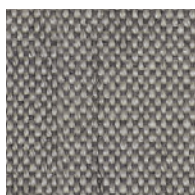
356



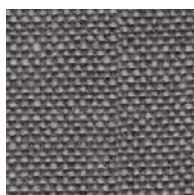
233



223



126



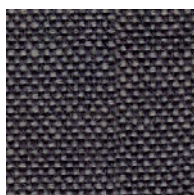
136



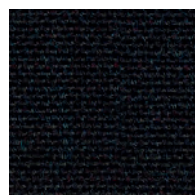
393



682



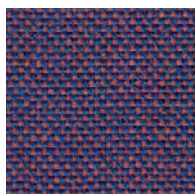
266



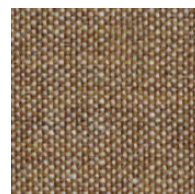
296



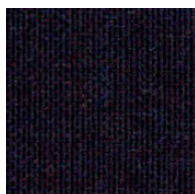
406



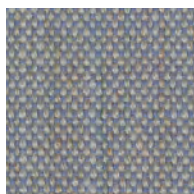
686



252



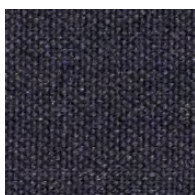
692



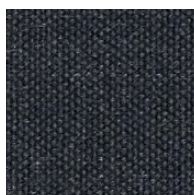
606



433



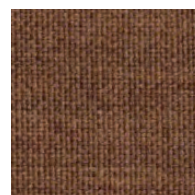
783



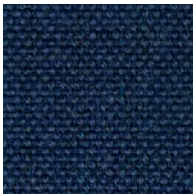
383



422



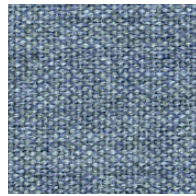
452



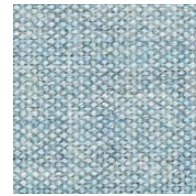
866



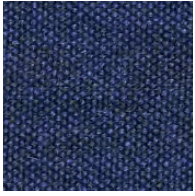
836



733



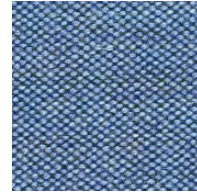
823



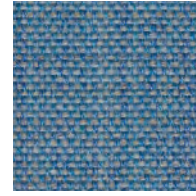
773



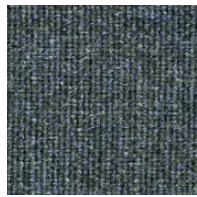
796



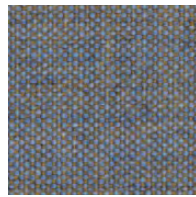
743



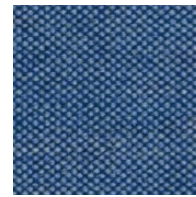
816



753



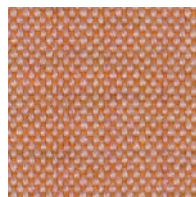
722



762



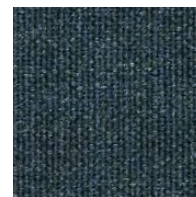
716



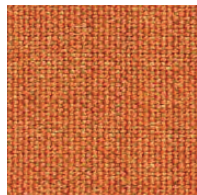
516



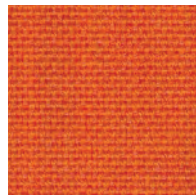
852



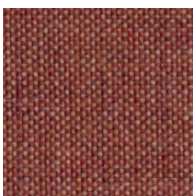
873



543



536



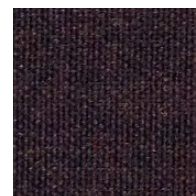
632



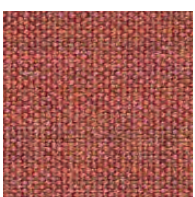
443



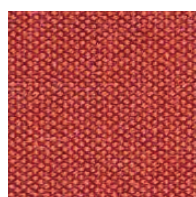
612



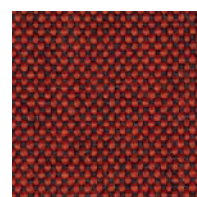
373



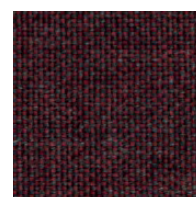
653



643



566



662

Remix 3

Designed by Giulio Ridolfo

DK

Anvendelse Kontorer, hoteller, institutioner, private indretninger. Stor slidstyrke.

Beskrivelse 90% ny uld, kamgarn, 10% nylon. Bredder ca. 140 cm. Vægt ca. 420 g/lbm.

Materialerfarvet. Nuanceforskelle kan forekomme.

Ægkant ↔

Slidstyrke: Ca. 100.000 slidbevægelser efter Martindale metoden EN ISO 12947. **Lysægted** (ISO) 5-7. **Pilling** (EN ISO) 4. **Gnidægted** (ISO) tør 4-5, våd 3-5. **Lydabsorption** (EN ISO 354) 0.55/Class D (fladt), 0.80/Class B (foldet). **Airflow** 465 Pa s/m. **Flammesikring:** AS/NZS 1530.3. AS/NZS 3837 Class 2. ASTM E84 class A. BS 5852 Crib 5 med flammesikring. BS 5852 ignition source 3. BS 5852 part 1. EN 1021-1/2. GB 50222 B1 med flammesikring. IMO FTP Code 2010:Part 7 med flammesikring. IMO FTP Code 2010:Part 8. NF D 60 013. NFPA 260. SN 198 898 5.3 med flammesikring. UNI 9175 11M. US Cal. Bull. 117-2013. ÖNORM B1 / Q1. (Kopi af testrapport kan rekvireres).

Vedligeholdelse Se ISO symboler.

UK/US

Application Offices, hotels, institutions, domestic use. Great durability.

Description 90% new wool, worsted, 10% nylon. Width app. 55 inches (140 cm). Weight app. 13.5 oz/ly (420 g/lin.m). Material dyed. Colour differences may occur.

Selvedge/Direction ↔

Abrasion: App. 100,000 rubs acc. to the Martindale method EN ISO 12947. **Lightfastness** (ISO) 5-7. **Pilling** (EN ISO) 4. **Fastness to rubbing** (ISO) dry 4-5, wet 3-5. **Sound absorption** (EN ISO 354) 0.55/Class D (flat), 0.80/Class B (waved). **Airflow** 465 Pa s/m. **Flame resistance:** AS/NZS 1530.3. AS/NZS 3837 Class 2. ASTM E84 class A. BS 5852 Crib 5 with treatment. BS 5852 ignition source 3. BS 5852 part 1. EN 1021-1/2. GB 50222 B1 with treatment. IMO FTP Code 2010:Part 7 with treatment. IMO FTP Code 2010:Part 8. NF D 60 013. NFPA 260. SN 198 898 5.3 with treatment. UNI 9175 11M. US Cal. Bull. 117-2013. ÖNORM B1 / Q1. (Copy of test report available).

Care Please see the ISO symbols.

DE

Anwendungsbereich Büros, Hotels, Objectbereich, privaten Wohnbereich. Hohe Strapazierfähigkeit.

Beschreibung 90% Schurwolle, Kammgarn, 10% Nylon. Breite ca. 140 cm. Gewicht ca. 420 g/lfm. Materialgefärbt. Farbunterschiede können vorkommen.

Webkant ↔

Scheuerfestigkeit: Ca. 100.000 Scheuerhübe gemäss der Martindale Methode EN ISO 12947. **Lichtechtheit** (ISO) 5-7. **Pilling** (EN ISO) 4. **Reibechtheit** (ISO) trocken 4-5, nass 3-5. **Schallabsorption** (EN ISO 354) 0.55/Class D (glatt), 0.80/Class B (gefaltet). **Airflow** 465 Pa s/m. **Flammenschutz:** AS/NZS 1530.3. AS/NZS 3837 Class 2. ASTM E84 class A. BS 5852 Crib 5 mit Ausrüstung. BS 5852 ignition source 3. BS 5852 part 1. EN 1021-1/2. GB 50222 B1 mit Ausrüstung. IMO FTP Code 2010:Part 7 mit Ausrüstung. IMO FTP Code 2010:Part 8. NF D 60 013. NFPA 260. SN 198 898 5.3 mit Ausrüstung. UNI 9175 11M. US Cal. Bull. 117-2013. ÖNORM B1 / Q1. (Kopie von Prüfungsbericht verfügbar).

Pflege Siehe ISO Pflegesymbole.

NL

Toepassing Kantoren, hotels, instellingen, de privéfeer. Uitstekende slijtvastheid.

Omschrijving 90% scheerwol, kamgaren, 10% nylon. Breedte ca. 140 cm. Gewicht ca. 420 g/str. m. Materiaalgeverfd. Kleurverschillen kunnen optreden.

Zelfkant ↔

Slijtvastheid: Ca. 100.000 toeren Martindale EN ISO 12947. **Lichtechtheid** (ISO) 5-7. **Pilling** (EN ISO) 4. **Wrijftechtheid** (ISO) droge 4-5, natte 3-5. **Geluidsabsorptie** (EN ISO 354) 0.55/Class D (vlak), 0.80/Class B (geplooid). **Airflow** 465 Pa s/m. **Brandwerendheid:** AS/NZS 1530.3. AS/NZS 3837 Class 2. ASTM E84 class A. BS 5852 Crib 5 met behandeling. BS 5852 ignition source 3. BS 5852 part 1. EN 1021-1/2. GB 50222 B1 with treatment. IMO FTP Code 2010:Part 7 met behandeling. IMO FTP Code 2010:Part 8. NF D 60 013. NFPA 260. SN 198 898 5.3 met behandeling. UNI 9175 11M. US Cal. Bull. 117-2013. ÖNORM B1 / Q1. (Op aanvraag sturen wij U graag een kopie van het testrapport toe).

Onderhoud Zie de ISO symbolen.

FR

Domaine d'utilisation Tissu d'ameublement pour aménagement privé et public. Grande résistance.

Description 90% laine vierge, peignée, 10% nylon. Largeur env. 140 cm. Poids env. 420 g/m lg. Teinture en bourre. Ecart de coloris possibles.

Lisière ↔

Résistance à l'abrasion: Env. 100.000 révolutions selon le procédé Martindale EN ISO 12947. **Résistance à la lumière** (ISO) 5-7. **Boulochage** (EN ISO) 4. **Résistance au frottement** (ISO) sec 4-5, mouillé 3-5. **Absorption acoustique** (EN ISO 354) 0.55/Class D (à plat), 0.80/Class B (plié). **Airflow** 465 Pa s/m. **Normes au feu:** AS/NZS 1530.3. AS/NZS 3837 Class 2. ASTM E84 class A. BS 5852 Crib 5 avec traitement. BS 5852 ignition source 3. BS 5852 part 1. EN 1021-1/2. GB 50222 B1 avec traitement. IMO FTP Code 2010:Part 7 avec traitement. IMO FTP Code 2010:Part 8. NF D 60 013. NFPA 260. SN 198 898 5.3 avec traitement. UNI 9175 11M. US Cal. Bull. 117-2013. ÖNORM B1 / Q1. (La copie du compte rendu des tests est disponible sur demande).

Entretien Voir les symboles ISO.

IT

Destinazione d'uso Rivestimento per imbottiti casa e contract. Alta resistenza all'abrasione. **Caratteristiche** 90% lana vergine, pettinata, 10% nylon. Altezza circa 140 cm. Peso circa 420 gr/ml. Tinto in fiocco. Possibili differenze per colore.

Cimosa ↔

Abrasion: Circa 100.000 cicli/metodo Martindale EN ISO 12947. **Resistenza alla luce** (ISO) 5-7. **Pilling** (EN ISO) 4. **Resistenza allo sfregamento** (ISO) condizione a secco 4-5, condizione umido 3-5. **Assorbimento acustico** (EN ISO 354) 0.55/Class D (tenda a pannello (tesa)), 0.80/Class B (tenda arricciata). **Airflow** 465 Pa s/m. **Ignifugazione:** AS/NZS 1530.3. AS/NZS 3837 Class 2. ASTM E84 class A. BS 5852 Crib 5 trattato ignifugo. BS 5852 ignition source 3. BS 5852 part 1. EN 1021-1/2. GB 50222 B1 trattato ignifugo. IMO FTP Code 2010:Part 7 trattato ignifugo. IMO FTP Code 2010:Part 8. NF D 60 013. NFPA 260. SN 198 898 5.3 trattato ignifugo. UNI 9175 11M. US Cal. Bull. 117-2013. ÖNORM B1 / Q1. (Disponibile copia del test).

Manutenzione Per favore seguire simboli ISO.

ES

Aplicación Adecuado, para el uso en oficinas, hoteles, instituciones y hogares. Gran resistencia al desgaste.

Descripción 90% lana virgen, peinada, 10% nilón. Anchura aprox. 140 cm. Peso aprox. 420 gr/ml. Teñido en material. Posibles variaciones de color.

Filo ↔

Resistencia al desgaste: Aprox. 100.000 ciclos según el método Martindale EN ISO 12947. **Resistencia a la luz** (ISO) 5-7. **Relleño** (EN ISO) 4. **Solidez al frotamiento** (ISO) seco 4-5, mojado 3-5. **Absorción acústica** (EN ISO 354) 0.55/Class D (estor), 0.80/Class B (cortina). **Airflow** 465 Pa s/m. **Resistencia al fuego:** AS/NZS 1530.3. AS/NZS 3837 Class 2. ASTM E84 class A. BS 5852 Crib 5 con tratamiento. BS 5852 ignition source 3. BS 5852 part 1. EN 1021-1/2. GB 50222 B1 con tratamiento. IMO FTP Code 2010:Part 7 con tratamiento. IMO FTP Code 2010:Part 8. NF D 60 013. NFPA 260. SN 198 898 5.3 con tratamiento. UNI 9175 11M. US Cal. Bull. 117-2013. ÖNORM B1 / Q1. (Copia del informe de ensayos disponible).

Limpieza Consulte los símbolos ISO.

JP

用途 オフィス、ホテル、各種施設、住宅インテリア。耐耗性大。

詳細 90% ニューウール ウーステッド、10% ナイロン。幅:140 cm。重量:1mあたり約420 g。布染め。色彩ニューアンスに多少の違いが生じる可能性あり。

耳、ふち、 ↔**テスト:**

磨耗: マーチンデール法により摩擦お運動約100.000回。EN ISO 12947. **色褪せ保証:** (ISO) 5-7. **ピリング** (EN ISO) 4. **摩擦保証:** (ISO) 乾燥状態 4-5、濡れた状態 3-5. **吸音率** (EN ISO 354) 0.55/Class D (パネル状), 0.80/Class B (ドレープ状). **気流:** 465 Pa s/m. **耐火性:** AS/NZS 1530.3. AS/NZS 3837 Class 2. ASTM E84 class A. 特殊耐火処理を行うことにより、BS 5852 Crib 5 に到達可能。BS 5852 ignition source 3. BS 5852 part 1. EN 1021-1/2. 特殊耐火処理を行うことにより、GB 50222 B1 に到達可能。特殊耐火処理を行うことにより、IMO FTP Code 2010:Part 7 に到達可能。IMO FTP Code 2010:Part 8. NF D 60 013. NFPA 260. 特殊耐火処理を行うことにより、SN 198 898 5.3 に到達可能。UNI 9175 11M. US Cal. Bull. 117-2013. ÖNORM B1 / Q1. (テストレポートのコピー入手可能。)

手入れ

ISO シンボル参照。

CN

适用范围 办公室, 宾馆酒店, 公共设施, 居家使用。耐耗性大。

成分 90% 新羊毛, 精纺, 10% 尼龙。幅宽约55英寸(140cm)。重量约420克/延米。原材料染色面料。颜色可能稍有色差。

图纹方向 ↔

马丁代尔法约100,000转。EN ISO 12947. **光照色牢度** (ISO) 5-7. **起毛起球** (EN ISO) 4. **摩擦色牢度** (ISO) 干燥4-5, 湿3-5. **吸声系数** (EN ISO 354) 0.55/Class D (隔断帘), 0.80/Class B (一般窗帘使用). **气流阻力** 465 Pa s/m. **阻燃性:** AS/NZS 1530.3. AS/NZS 3837 Class 2. ASTM E84 class A. 特别耐火处理时BS 5852 Crib 5 可以满足。BS 5852 ignition source 3. BS 5852 part 1. EN 1021-1/2. 特别耐火处理时GB 50222 B1 可以满足。特别耐火处理时IMO FTP Code 2010:Part 7 可以满足。IMO FTP Code 2010:Part 8. NF D 60 013. NFPA 260. 特别耐火处理时SN 198 898 5.3 可以满足。UNI 9175 11M. US Cal. Bull. 117-2013. ÖNORM B1 / Q1. (可提供测试报告副本).

维护 请参照ISO标志。



10 year warranty



Quality and environmental system accreditation according to ISO 9001 and ISO 14001.

*ACT® Registered Certification Marks

Encouraging the use of sustainable fibres. Durable and high quality. Hazardous substances restricted.

Contact and further information www.kvadrat.dk

US contact info: 1-800-620-9309